



THE ROMSEY

3 BEDROOM SEMI-DETACHED HOUSE

A stylish three-bedroom semi-detached family home with single garage.

The ground floor offers excellent living space with a bright and spacious lounge, entrance hall, and downstairs cloakroom.

The impressive open plan kitchen/diner with integrated appliances features French doors from the dining area, offering family dining with a view of the rear garden and patio.

The first floor accommodates three generous sized bedrooms with the master benefitting from a stylish en-suite shower room with fully tiled walls, rain shower and heated towel rail.

The Romsey has a single garage, block paved driveway and turfed front garden.

HOMES OF QUALITY & STYLE

Get in touch

Head Office: 01522 512200

Email: info@taylorlindseyhomes.co.uk

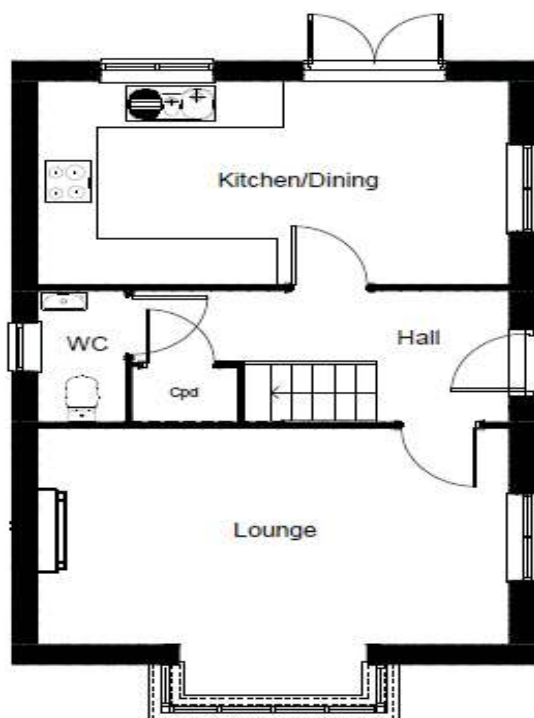
www.taylorlindseyhomes.co.uk

Features include:

- Designer Kitchen with fully integrated Appliances including Induction Hob, Double Oven, Microwave, Dishwasher, Fridge Freezer and Washer Dryer
- Porcelanosa Ceramic Tiling to Bathroom and En-suite Walls with Luxury Fitted Bathroom Furniture
- Single Garage with Block Paved Driveway
- Grade A Worcester Bosch Condensing Boiler
- Fire & Fire Surround
- Alarm & Security Lighting
- PVCu Windows and Doors to Secure by Design Standard



GROUND FLOOR



THE ROMSEY

3 Bedroom Semi-Detached | Garage | Lounge
Kitchen/Dining | Entrance Hall
Bathroom | Master En-suite

Ground Floor

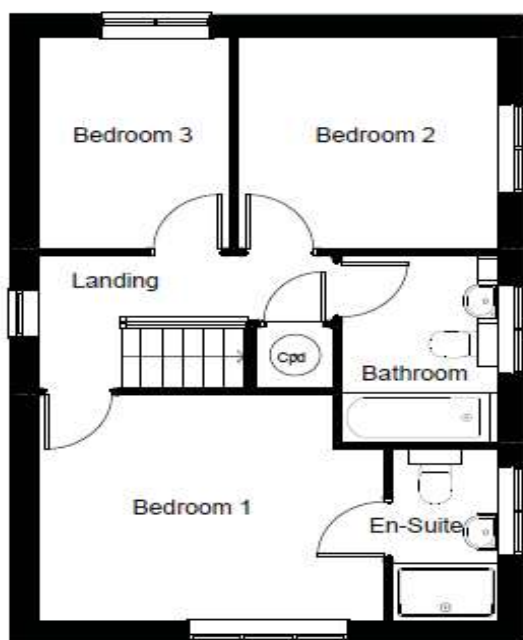
Lounge	17'1" x 12'8"	5.20m x 3.86m
Kitchen/ Dining	17'1" x 9'6"	5.20m x 2.89m

First Floor

Bedroom 1	12'10" x 10'4"	3.92m x 3.15m
En-suite	7'10" x 3'11"	2.40m x 1.21m
Bedroom 2	9'9" x 9'8"	2.96m x 2.94m
Bedroom 3	9'8" x 7'1"	2.94m x 2.17m
Bathroom	8'7" x 5'10"	2.63m x 1.78m

Illustrations and plans are indicative and for guidance only. Architectural details, materials and colours will change from plot to plot. Design changes may be made without prior notice. All dimensions shown on this brochure are approximate and intended for guidance only.

FIRST FLOOR



HOMES OF QUALITY & STYLE

Get in touch

Head Office: 01522 512200
Email: info@taylorlindseyhomes.co.uk
www.taylorlindseyhomes.co.uk

