



# THE MELROSE

4 BEDROOM DETACHED HOUSE

A spacious four-bedroom family home featuring a large well-equipped kitchen / diner with integrated appliances, perfect for cooking and gathering as a family.

The utility room adds convenient space for laundry. The dining area benefits from French doors leading onto the rear garden with patio area provided for outdoor living. The elegant lounge is complimented by a gas fire and surround.

Upstairs offers four well-proportioned bedrooms, three of which are double. The master bedroom features a luxury en-suite shower room. The further three bedrooms share the stylish family bathroom with separate bath and shower cubicle and Porcelanosa tiling.

The Melrose benefits from an integral garage, private block paved driveway and turfed front garden.

HOMES OF QUALITY & STYLE

*Get in touch*

Head Office: 01522 512200

Email: [info@taylorlindseyhomes.co.uk](mailto:info@taylorlindseyhomes.co.uk)

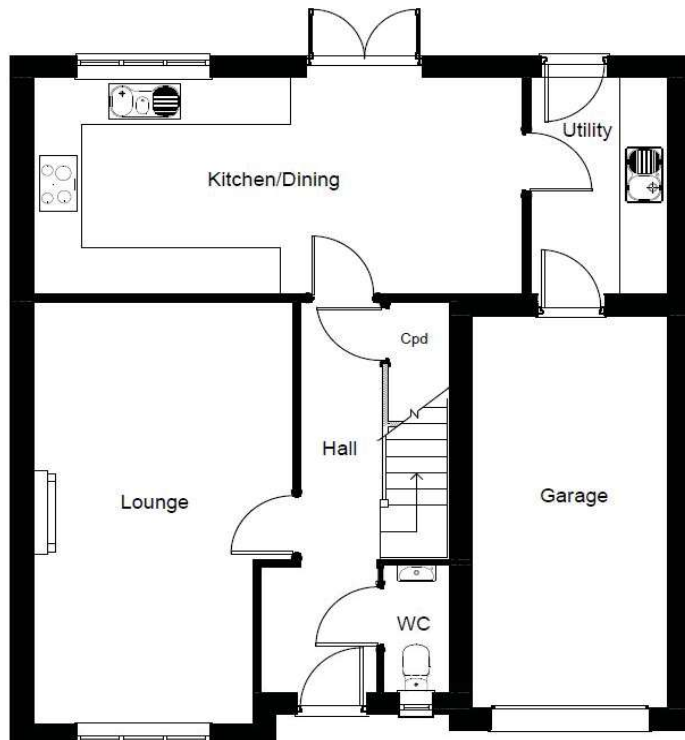
[www.taylorlindseyhomes.co.uk](http://www.taylorlindseyhomes.co.uk)

## *Features include:*

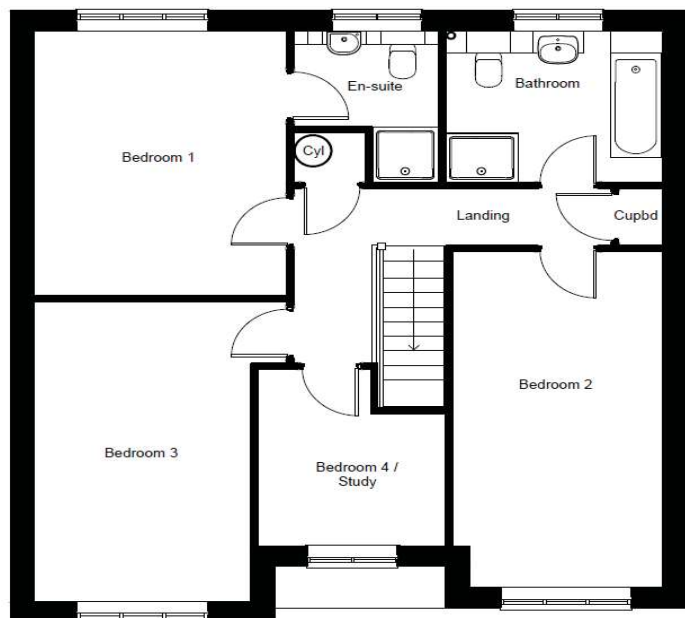
- Designer Kitchen with fully integrated Appliances including Induction Hob, Double Oven, Microwave, Dishwasher and Fridge Freezer
- Porcelonsa Ceramic Tiling to Bathroom and En-suite Walls
- Luxury Fitted Bathroom Furniture
- Grade A Worcester Bosch Condensing Boiler
- Integral Garage with Block Paved Driveway
- Gas Fire & Fire Surround
- Alarm & Security Lighting
- PVCu Windows and Doors to Secure by Design Standard

**TAYLOR**  
HOMES  
**LINDSEY**

## GROUND FLOOR



## FIRST FLOOR



## HOMES OF QUALITY & STYLE

*Get in touch*

Head Office: 01522 512200  
Email: [info@taylorlindseyhomes.co.uk](mailto:info@taylorlindseyhomes.co.uk)  
[www.taylorlindseyhomes.co.uk](http://www.taylorlindseyhomes.co.uk)

# THE MELROSE

4 Bedroom Detached | Garage  
Lounge | Kitchen/Dining | Utility  
Entrance Hall | Bathroom | Master En-suite

### Ground Floor

Lounge	19'9" x 11'5"	6.02m x 3.47m
Kitchen/ Dining	21'7" x 10'1"	6.59m x 3.07m
Utility	10'1" x 6'0"	3.07m x 1.83m

### First Floor

Bedroom 1	14'1" x 11'4"	4.29m x 3.45m
En-suite	8'1" x 6'7"	2.46m x 2.00m
Bedroom 2	17'11" x 9'5"	5.46m x 2.87m
Bedroom 3	16'0" x 9'9"	4.88m x 2.97m
Bedroom 4	9'5" x 8'6"	2.88m x 2.58m
Bathroom	9'9" x 8'1"	2.97m x 2.46m

Illustrations and plans are indicative and for guidance only. Architectural details, materials and colours will change from plot to plot. Design changes may be made without prior notice. All dimensions shown on this brochure are approximate and intended for guidance only.

