



# THE EVESHAM

3 BEDROOM DETACHED HOUSE

A delightful and spacious three bedroom detached family home ideal for couples and families.

The ground floor offers modern open plan kitchen/diner with French doors leading onto the rear garden with patio area for outside entertainment. The bright and spacious lounge features an electric fire with surround as a focal point. There is a downstairs cloakroom for added convenience.

There are three well proportioned bedrooms with the master benefitting from a stylish en-suite. The family bathroom benefits from a separate shower cubicle, fully tiled walls, fitted furniture and heated towel radiator.

The Evesham offers a single garage with power and lighting, block paved driveway and turf to front garden.

HOMES OF QUALITY & STYLE

*Get in touch*

Head Office: 01522 512200

Email: [info@taylorlindseyhomes.co.uk](mailto:info@taylorlindseyhomes.co.uk)

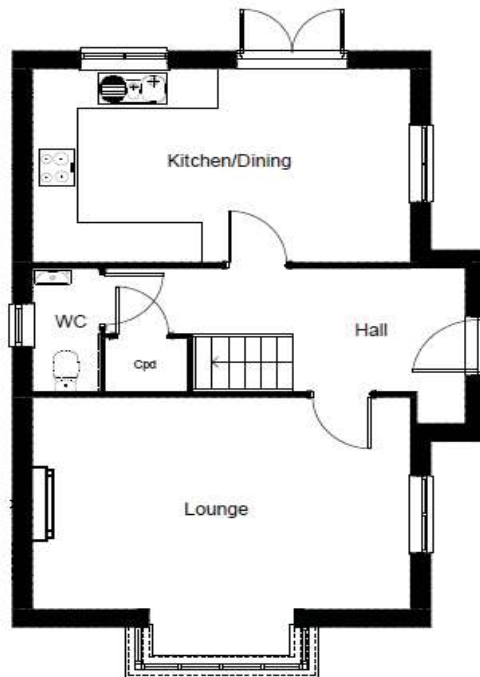
[www.taylorlindseyhomes.co.uk](http://www.taylorlindseyhomes.co.uk)

## *Features include:*

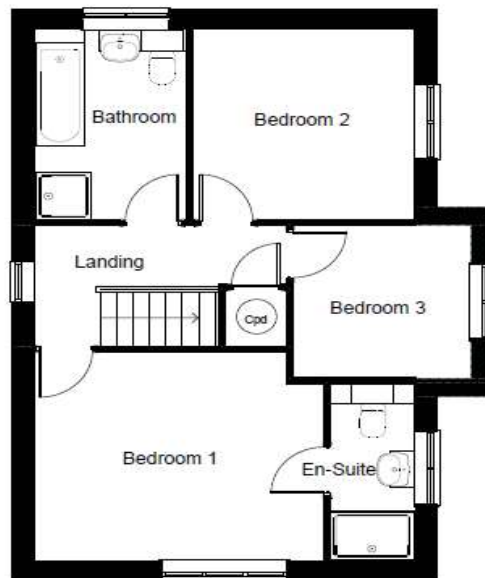
- Designer Kitchen with fully integrated Appliances including Induction Hob, Double Oven, Microwave, Dishwasher, Fridge Freezer and Washer Dryer
- Open Plan Kitchen/Diner with French Doors to Rear Garden
- Porcelanosa Full Wall Tiling to Bathroom & En-Suite, Kitchen Floor and Cloakroom Floor
- Electric Fire & Fire Surround
- Grade A Worcester Bosch Condensing Boiler
- Garage with Block Paved Driveway
- Alarm & Security Lighting
- PVCu Windows and Doors to Secure by Design Standard



## GROUND FLOOR



## FIRST FLOOR



HOMES OF QUALITY & STYLE

*Get in touch*

Head Office: 01522 512200  
Email: [info@taylorlindseyhomes.co.uk](mailto:info@taylorlindseyhomes.co.uk)  
[www.taylorlindseyhomes.co.uk](http://www.taylorlindseyhomes.co.uk)

# THE EVESHAM

3 Bedroom Detached  
Lounge | Kitchen/Dining  
Entrance Hall | Cloakroom  
Bathroom | Master En-suite | Garage

### Ground Floor

Lounge	17'9" x 13'9"	5.42m x 4.20m
Kitchen/ Dining	17'9" x 10'3"	5.42m x 3.12m

### First Floor

Bedroom 1	13'7" x 11'4"	4.14m x 3.46m
En-suite	9'8" x 3'11"	2.94m x 1.21m
Bedroom 2	10'5" x 10'4"	3.18m x 3.16m
Bedroom 3	8'3" x 8'2"	2.52m x 2.49m
Bathroom	10'4" x 7'1"	3.16m x 2.17m

Illustrations and plans are indicative and for guidance only. Architectural details, materials and colours will change from plot to plot. Design changes may be made without prior notice. All dimensions shown on this brochure are approximate and intended for guidance only.

**TAYLOR**  
HOMES  
**LINDSEY**