



# THE TAVISTOCK

## 3 BEDROOM DETACHED HOUSE

A delightful and spacious three bedroom detached family home ideal for couples and families.

The ground floor offers a modern open plan kitchen diner with integrated appliances. The utility room adds convenient space for laundry.

The lounge with fire and surround has French doors opening out to the rear garden and generous patio area, ideal for outdoor entertaining. There is a downstairs cloakroom.

There are three well proportioned bedrooms, with the master benefitting from a stylish en-suite. The family bathroom benefits from full wall tiling, heated towel rail and fitted bathroom furniture.

The Tavistock offers a single garage with power and lighting, block paved driveway and turf to front garden.

HOMES OF QUALITY & STYLE

*Get in touch*

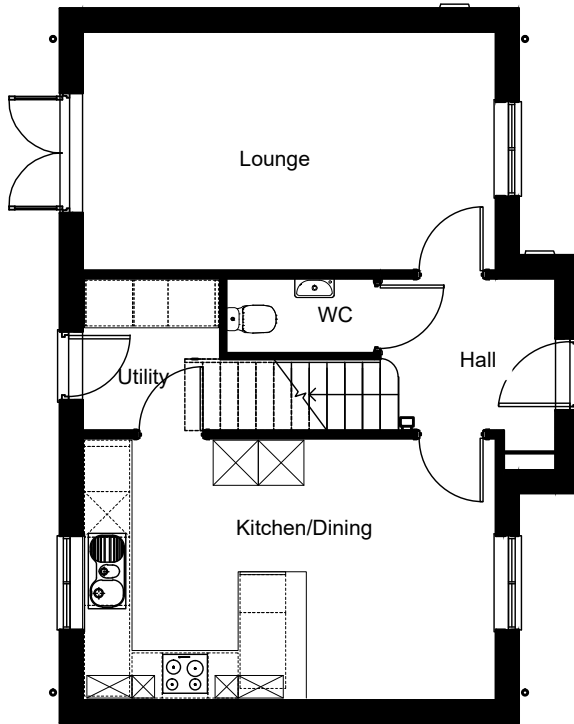
Head Office: 01522 512200  
Email: [info@taylorlindseyhomes.co.uk](mailto:info@taylorlindseyhomes.co.uk)  
[www.taylorlindseyhomes.co.uk](http://www.taylorlindseyhomes.co.uk)

### *Features include:*

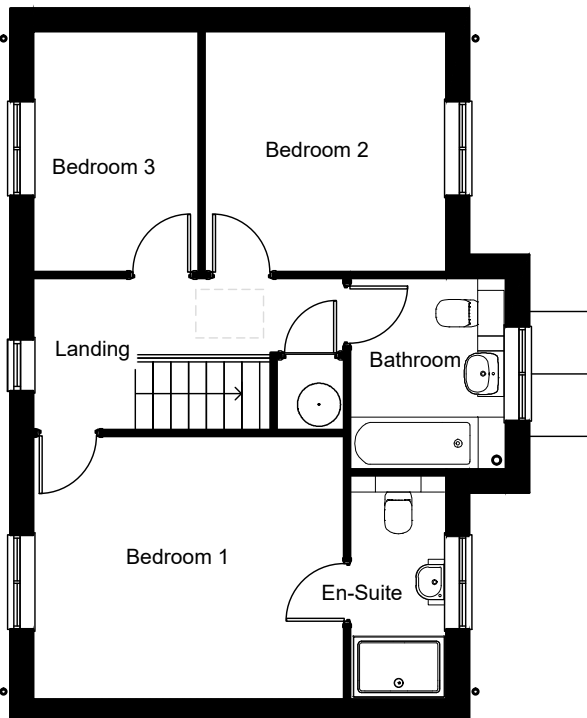
- Designer Kitchen with fully integrated Appliances including Induction Hob, Double Oven, Microwave, Dishwasher, Fridge Freezer
- Utility Room
- Porcelanosa Ceramic Tiling to Bathroom & Ensuite Walls, Kitchen, Utility and Cloakroom Floors
- Fire & Fire Surround
- Worcester Bosch Grade A Condensing Boiler
- Garage & Block Paved Driveway
- Alarm & Security Lighting
- PVCu Windows and Doors to Secure by Design Standard



## GROUND FLOOR



## FIRST FLOOR



HOMES OF QUALITY & STYLE

*Get in touch*

Head Office: 01522 512200  
 Email: [info@taylorlindseyhomes.co.uk](mailto:info@taylorlindseyhomes.co.uk)  
[www.taylorlindseyhomes.co.uk](http://www.taylorlindseyhomes.co.uk)

# THE TAVISTOCK

3 Bedroom Detached | Garage  
 Lounge | Kitchen/Dining | Utility  
 Entrance Hall | Bathroom | Master En-suite

### Ground Floor

Lounge	17'9" x 10'3"	5.42m x 3.12m
Kitchen/ Dining	17'9" x 11'2"	5.42m x 3.41m
Utility	6'5" x 5'11"	1.96m x 1.79m

### First Floor

Bedroom 1	13'5" x 11'4"	4.09m x 3.46m
En-suite	9'8" x 4'1"	2.94m x 1.25m
Bedroom 2	10'5" x 10'5"	3.17m x 3.17m
Bedroom 3	10'5" x 7'0"	3.17m x 2.14m
Bathroom	8'4" x 6'8"	2.54m x 2.04m

*Illustrations and plans are indicative and for guidance only. Architectural details, materials and colours will change from plot to plot. Design changes may be made without prior notice. All dimensions shown on this brochure are approximate and intended for guidance only.*

